



Do I need to purchase a whole new system, or does Datadragon[®] work with my current equipment?

Not usually,

You don't need to buy a whole new system to get the benefits of Datadragon[®]. It will work in your network's current configuration and supplement any existing tools by providing network segmentation, access management, traffic management, and intrusion detection.

Datadragon[®] is initially installed in a Passive Learning Mode. It learns information about the endpoints as soon as it sees a heartbeat on an IP address. It automatically identifies any device and its traffic and categorizes the device to ensure it is in the proper network segmentation.

What are the advantages of Datadragon[®] over Meraki?

Advantages include:

- Datadragon[®] is a network visibility and management platform. Meraki is a Wi-Fi platform.
- Datadragon[®] provides a full managed solution. Meraki is hardware alone that requires additional management.
- Datadragon[®] is a cross platform solution, which means that you can change to different Wi-Fi hardware. Meraki only works within its own ecosystem.
- Datadragon[®] is equipped with edge computing. Meraki does not have this capability.

How technical do you need to be to set up and manage Datadragon[®]?

Not very technical,

As a managed solution, the Datadragon[®] system configuration and setup are done by our team of engineers. We also perform regular maintenance updates and ensure that the latest patches, improvements, and threat detection information are installed and available.

Our goal is to tailor a simplified, secure solution that provides you with understandable information and total command of your network.



Can you have multiple VPN's?

Yes, but

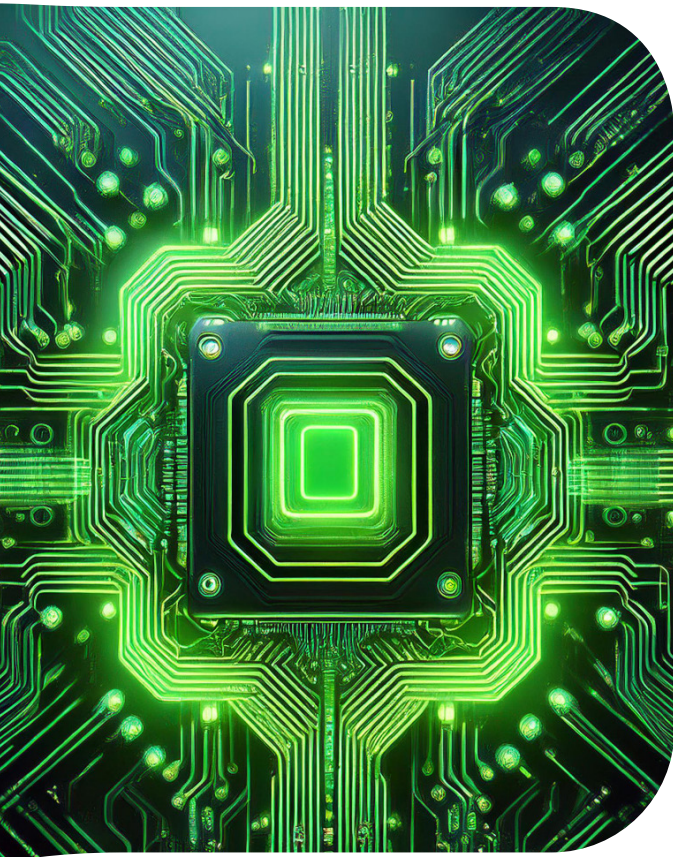
You should discuss VPN requirements with our team to ensure the most optimized VPNs over VSAT.

What is deep network inspection?

All the details

This is the ability to understand the details of all the devices within your network and what applications are being utilized across it.

This allows you to better understand the needs of the environment and systems on your network.



How much space and power does Datadragon[®] require?

Less than a microwave

Datadragon[®] only requires 2U of rack space and 120VAC with an idle of 12W. The dimensions are 7.5 x 7 x 3 inches and is a maximum of 5 pounds.

What kind of security is in Datadragon[®]?

Next GEN Firewall

This Next GEN Firewall provides comprehensive protection with features like, deep packet inspection, enabling precise threat identification and content filtering, user control, and stateful inspection, to ensure secure and efficient network management.



How do you control throughput?

Datadragon SD-WAN®

Powered by Datadragon®, our real time control software instantly analyzes and enforces policies on millions of applications, users, and devices populating the network.

The system prioritizes traffic based on the rules you establish.

How detailed is the throughput monitoring software for Datadragon®?

Extremely

There is no other platform in the market offering the level of granular insight into the flow of your throughput that Datadragon® does.

It allows for very fine control of your network traffic down to the user, device, and application.

What does LEO-ready mean regarding Datadragon® and operations?

More Connectivity

Low-Earth Orbit (LEO) satellite providers such as SpaceX, Amazon, Telesat, and OneWeb are making great strides on the path to affordable high-speed satellite Internet service.

Due to the ever-increasing demand for more bandwidth, it will take a diverse network of technologies to truly connect the planet, with satellite playing a key role. As a future-ready solution, Datadragon's® SD-WAN technology offers an open port for LEO service to plug-in to and expand throughput availability.

How many different reports can Datadragon® generate?

Unlimited types,

Currently, Datadragon® offers the ability to view your entire network in real time with information and reports available from us on demand. In a near future release, we will provide you with the ability to download basic reports with options for custom reporting features to follow.





What does Datadragon® cost, and do I need to have VSAT service?

VSAT - Not Required

This will include 24/7/365 access to our NOC technicians for all questions and issues, and our Datadragon® real time control software. Datadragon® does not require VSAT service. The only requirement is an internet connection.

What is required for set up and installation?

Depends on your needs,

Before Datadragon® can be installed at your location, we conduct some preliminary exploration in the form of a questionnaire and, if needed, a site inspection to better understand both your needs and network infrastructure.

This approach ensures that we're not only maximizing the value of Datadragon®, but that we're also establishing seamless support for you.

Is Datadragon® VLAN restricted?

No!

Datadragon® can be customized to fit to your needs.

How user-friendly is Datadragon®?

Very intuitive,

Datadragon® features an intuitive user interface designed to provide you with easy access to your data while empowering you with the ability to command network access, throughput usage, and security threats down to individual users and devices.

Datadragon® also has automated alerts built in to make you immediately aware of any potentially harmful activities happening across your network.

Is the system support included in the cost of Datadragon®?

Yes!

Datadragon® comes standard with 24/7/365 support from our team of experts at our Network Operations Center (NOC) with no extra fees.





Does Datadragon[®] only work with Isotropic's[®] VSAT service?

No!

Datadragon[®] can use Internet connectivity from any provider. As there will never be enough bandwidth, our SD-WAN features look forward to future integration with LEO, MEO, and GEO networks.

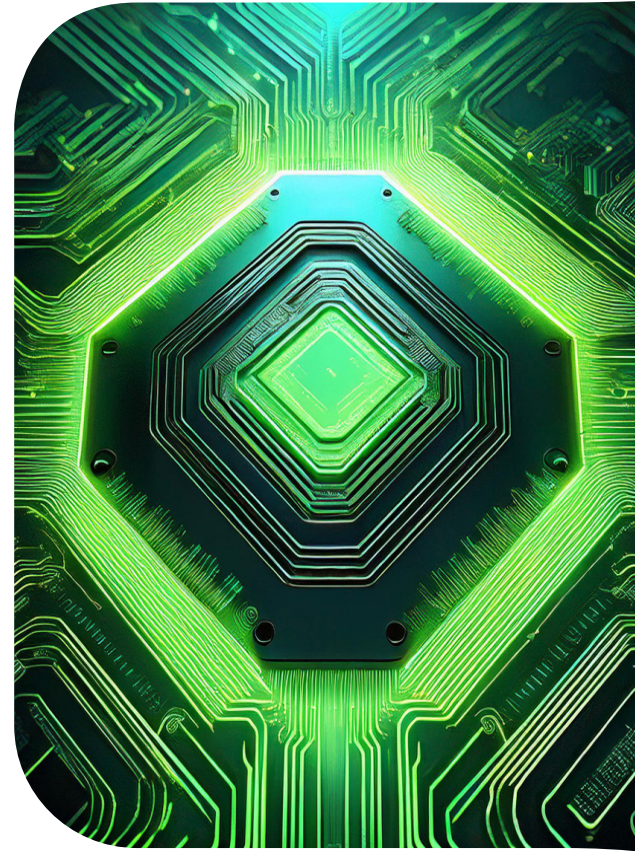
Can Datadragon[®] control multiple Internet inputs?

Yes!

Datadragon[®] can provide up to 5 different Internet inputs (5 SD-WAN).

How should the health check for the VSAT interface be configured on a Pepwave device when using Isotropic VSAT?

To configure the health check for the VSAT interface on a Pepwave device with Isotropic VSAT, set the health check to use Isotropic's DNS servers: 100.42.0.240 and 18.119.18.106. This ensures reliable connectivity monitoring specific to the Isotropic VSAT service.



What is SD-WAN and how does it affect my network?

SD-WAN stands for Software Defined–Wide Area Network. It is a virtual architecture that allows you to utilize multiple WAN connections to provide redundant connectivity across multiple carriers.

Datadragon[®] utilizes this framework to intelligently switch between networks to maximize your throughput and provide you with the best experience possible.

Isotropic Networks, Inc.
2492 Crest Drive
Lake Geneva, WI 53147-5515
sales@isotropic.network
© 2025

