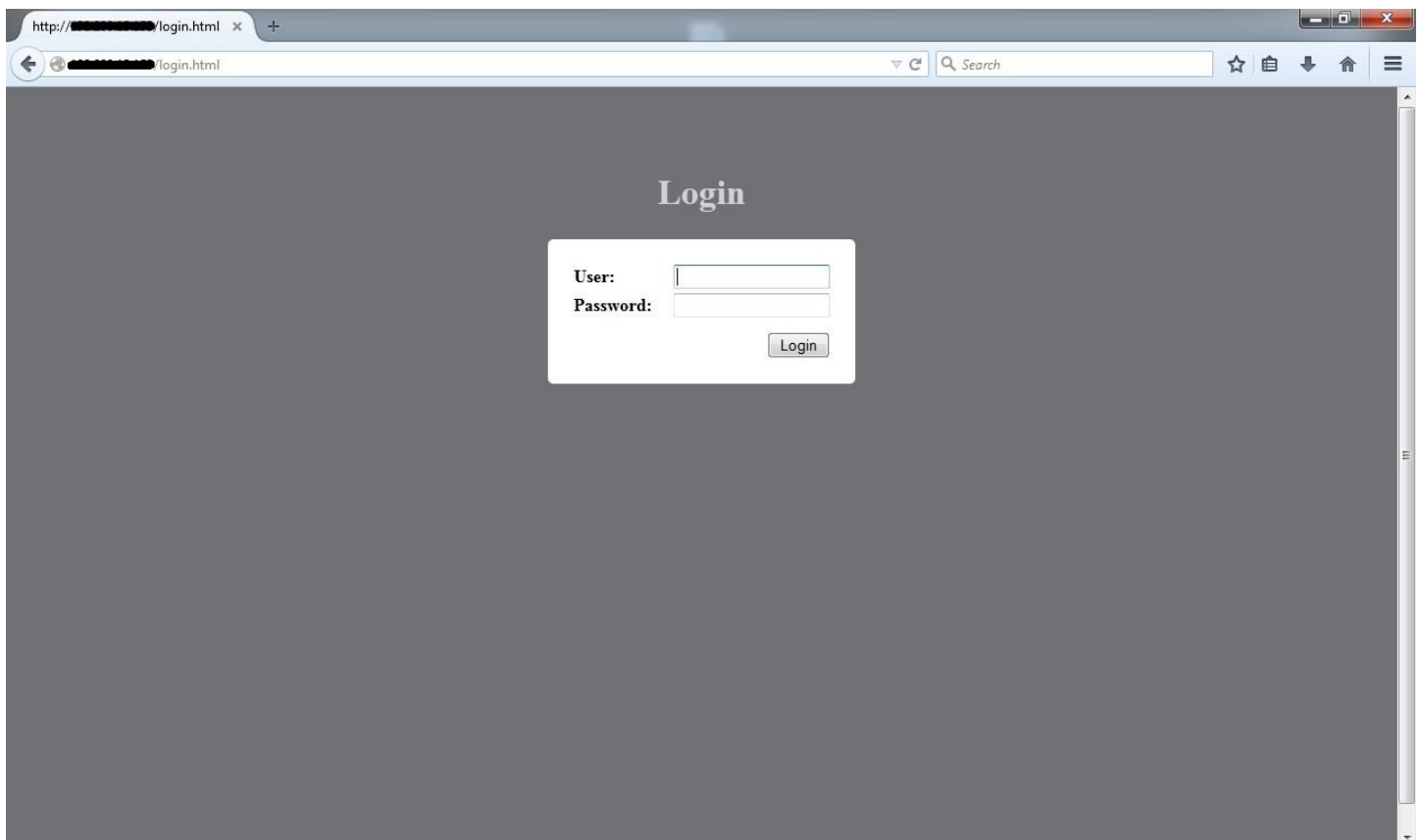




## iDirect X7 Modem Loading Instructions

Connect the computer to the LAN port on the back of the modem and open a web browser (Firefox, Chrome, Internet Explorer, etc.).

Type the modem's IP address into the address bar at the top of the browser.



Log into the modem using the following credentials:

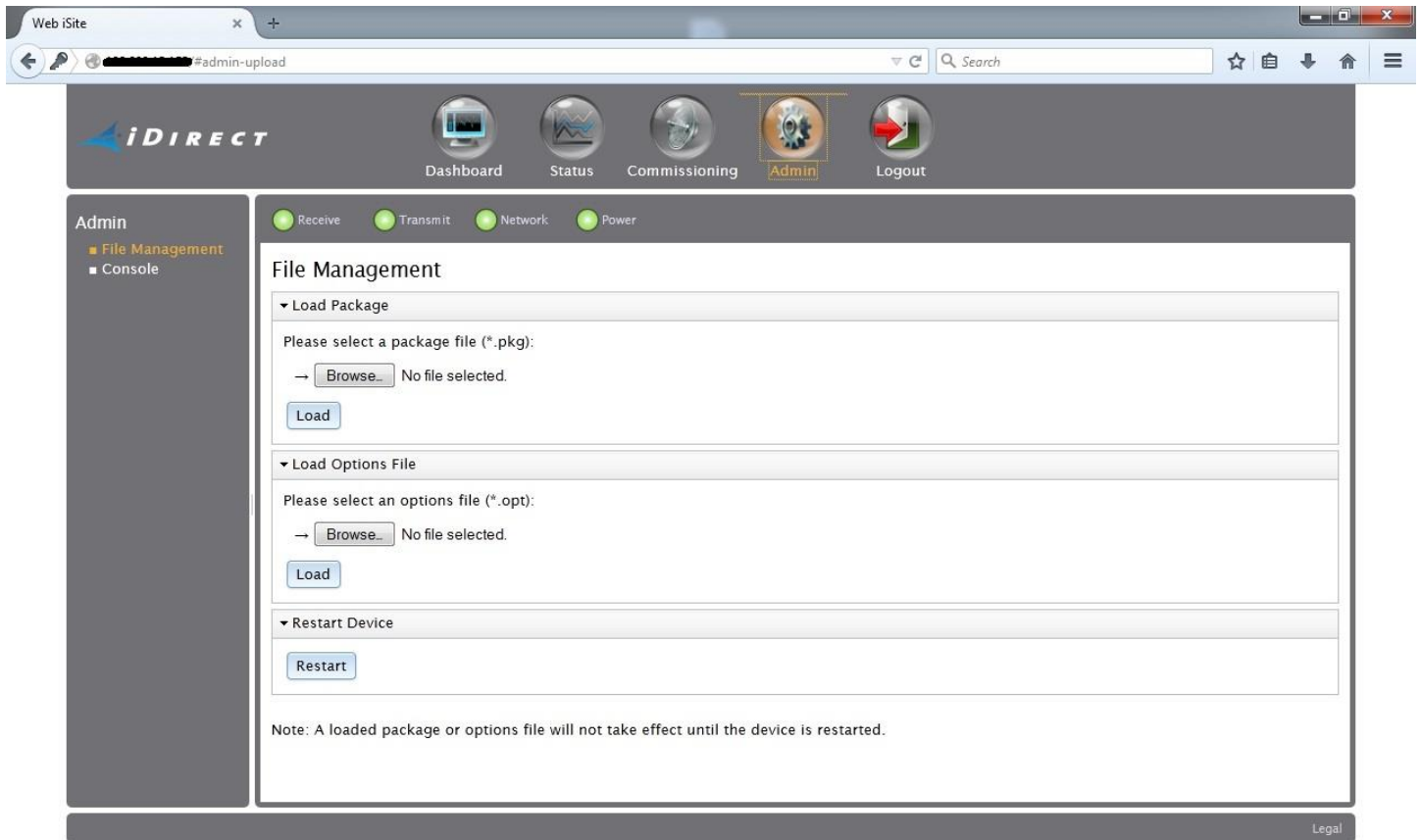
User: admin  
Password: P@55w0rd!

Download version IDX 4.3.0.0 from our web site at

["https://isotropic.network/wp-content/uploads/2023/08/evo\\_x7\\_rmt-21.0.6.4.pkg"](https://isotropic.network/wp-content/uploads/2023/08/evo_x7_rmt-21.0.6.4.pkg). Unzip this file into a separate folder on your desktop.

## Loading software and options files

If a new option file or software packages need to be loaded, navigate to the "Admin" tab.



To load the software package, click **Browse** under the Load package field. Locate the package on your computer and then click load. An example of a software package name is **evo\_x7\_rmt-21.0.6.4.pkg**.

Once complete, you will see a completed pop up notification.

To load the options file, click **Browse** under the Load Options File field. Locate the options file on your computer and then click load.

Once complete, you will see a completed pop up notification.

After both the package and options file have been loaded, click **Restart** under the Restart Device field.