



Pendragon™



Greater Security. Better Throughput.

www.isotropic.network
Isotropic Networks, Inc. 2023®



Isotropic™

Connecting the Planet



New levels of network transparency and insight are required to provide end users with optimized, secure throughput.

Take Total Control of Your Network

As applications become increasingly more complicated and communications distribution models continue to evolve toward hybrid networks, new levels of network transparency and insight are required to provide end users with optimized, secure throughput that meets and exceeds the regulations and needs of diverse global industries.

Introducing Pendragon™, an SD-WAN-enabled, LEO-ready Next Generation Cyber Security and bandwidth management platform utilizing AI to monitor, command, and protect network throughput in real time.

Secure, Optimized Throughput

Pendragon works across terrestrial and space-based single, multi-use, and hybrid networks to provide fully transparent, real-time deep network inspection and segmentation that identifies, classifies, and inventories all connected users and devices. It ensures cybersecurity risks are being appropriately identified, addressed, and remediated with minimal action requirements.

At the heart of Pendragon is Datadragon®, which utilizes passive and active monitoring techniques to provide unparalleled real-time flow visibility. Pendragon also discovers managed and unmanaged devices connecting to your heterogeneous network infrastructure and auto-classifies them using a multi-dimensional technology to identify device function, type, operating system (including version), vendor, and model.

How Pendragon Works



Pendragon operates on three core principles:

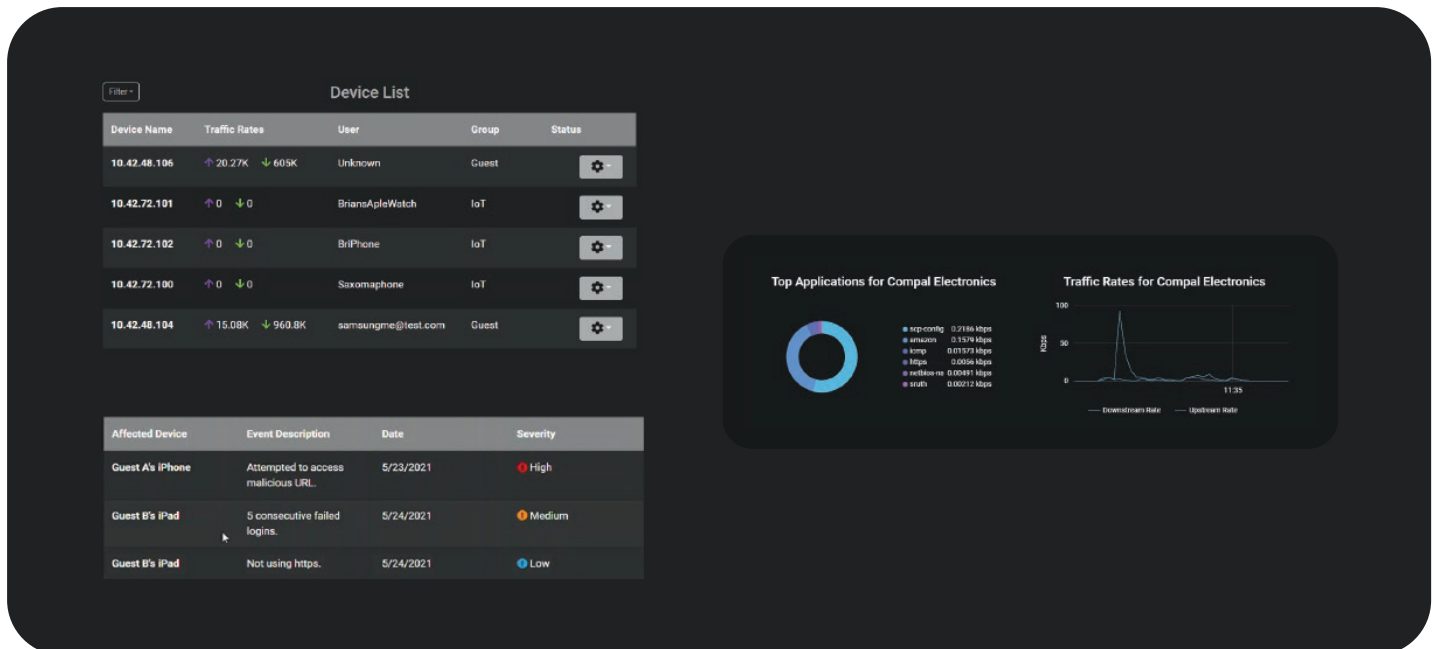
- Gaining **NETWORK ACCESS CONTROL (NAC)** through real-time, deep-network inspection and segmentation that identifies, classifies, and inventories all connected devices to ensure total control of who is permitted on the network and what they can do.
- Enabling **THROUGHPUT FLOW COMMAND** by understanding current and historic network utilization through intelligent on-demand control and machine learning, providing granular prioritization by network, user, or device.
- **NEXT GENERATION FIREWALL** protection through Pendragon's application-aware detection and intrusion prevention system designed to detect, log, and stop malicious attacks in real-time.



The Pendragon platform operates as a network agnostic device that can be integrated and scaled from a local network controller to a full SD-WAN solution.

Deploying Pendragon gives users the ability to help detect imminent attacks and implement device identity, traffic visibility, context-aware security policies, and dynamic network segmentation to stop them as devices move and networks change.

With Pendragon, end users are now empowered with total network visibility through an intuitive, easy-to-use hardware interface, giving them the ability to understand and command their local network and throughput for the very first time.





Pendragon is developed and supported by Isotropic™, a global provider of satellite Internet services and network management solutions.

Isotropic is a hybrid satellite communications and software development company building on our legacy as pioneers in satellite communications. We provide our clients with the highest levels of service: solving complex problems utilizing the latest technologies, and proactively providing first-of-their-kind innovative solutions that have pushed satellite communications forward since the earliest days of the Internet.

We provide **SPEED** of implementation and service, **COVERAGE** focused on satellite while linking networks, and real-time **INTELLIGENCE** and Next Generation Cybersecurity Platforms enabling total command of your throughput. Isotropic is working around the world, around the clock, connecting the planet.

