



DataDragon[®]



**Smarter bandwidth.
Better service.**



Providers need an intelligent solution to help them understand, shape, and optimize the flow of data.

Complete Visibility for a More Sophisticated Network

Today, people expect greater levels of connectivity, but providers are struggling to offer reliable, cost-effective access to bandwidth that gives end-users the frictionless experience they want. As new technologies and standards promising "more" come online, providers need an intelligent solution to help them understand, shape, and optimize the flow of data.

Welcome to Datadragon[®], an intuitive bandwidth management application that enables unprecedented levels of app-level transparency, optimization, and personalization across single, multi-use, or hybrid networks. Datadragon allows providers to move beyond current data models and work with their customers to create smart plans based on actual usage.

Shaping the Future of Bandwidth

Datadragon's artificial intelligence (AI) and built-in analytics learn usage patterns, then shape and deliver access to data based on available bandwidth streams from all terrestrial and satellite-based platforms. Datadragon provides users with the amount and quality of connectivity they need for their applications.

From checking email to streaming Netflix, users no longer need to suffer through the frustrations of dropped connections and slow lag times. And providers can now analyze and efficiently distribute bandwidth, creating opportunities for increased revenues from surplus availability.



How Datadragon Works



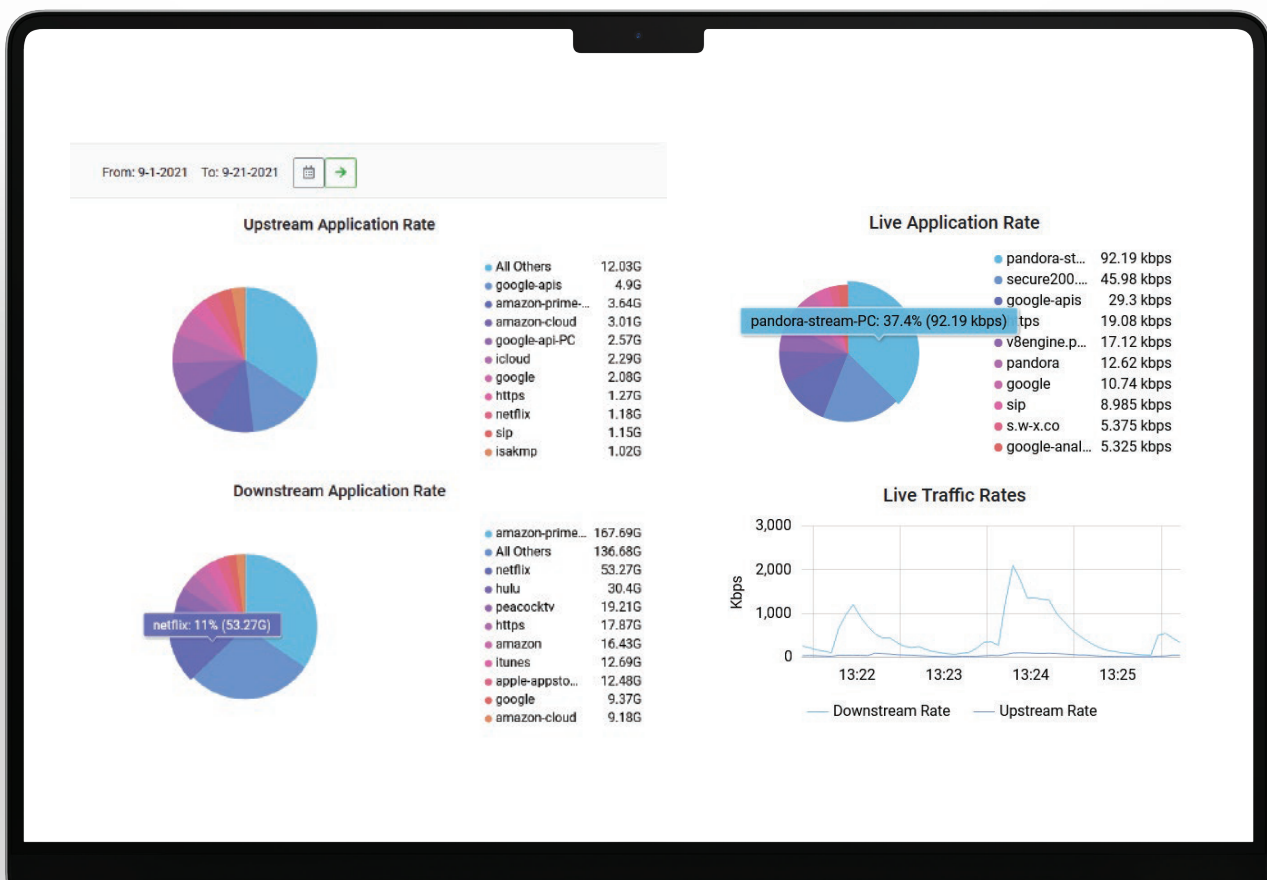
Datadragon operates on three core principles:

- **INCREASE VISIBILITY** by providing users with a real-time picture of bandwidth utilization, down to the application level, across any single SAT network.
- **OPTIMIZE ACCESS** by giving users control, letting them see, allocate, and purchase bandwidth based on their unique needs.
- **REDUCE FRICTION** through Datadragon's analytics and AI to provide Internet access that simply "works" by automatically allocating bandwidth based on user history and demand.



Datadragon solves inherent issues found when scaling network visibility solutions with flow data based on Netflow and IPFIX. Datadragon's learning classification engine reclassifies a flow at a minimum rate of once per second through a patented solution.

This provides unprecedented network visibility in terms of scale, cost, flexibility, accuracy, and real-time usability. The Datadragon platform operates in a fully software-based virtual appliance that can be integrated via API/PCRF and deployed across different points in a network, so users can apply automatic assurances of capacity to every network flow, dynamically based on real-time usage.





Datadragon[®]

Datadragon is developed and supported by Isotropic™, a global provider of satellite Internet services and network management solutions.

Isotropic is a hybrid satellite communications and software development company building on our legacy as pioneers in satellite communications. We provide our clients with the highest levels of service: solving complex problems utilizing the latest technologies, and proactively providing first-of-their-kind innovative solutions that have pushed satellite communications forward since the earliest days of the Internet.

We provide **SPEED** of implementation and service, **COVERAGE** focused on satellite while linking networks, and real-time **INTELLIGENCE** and Next Generation Cybersecurity Platforms enabling total command of your throughput. Isotropic is working around the world, around the clock, connecting the planet.



Isotropic™

www.isotropic.network
Isotropic Networks, Inc. 2023[®]