

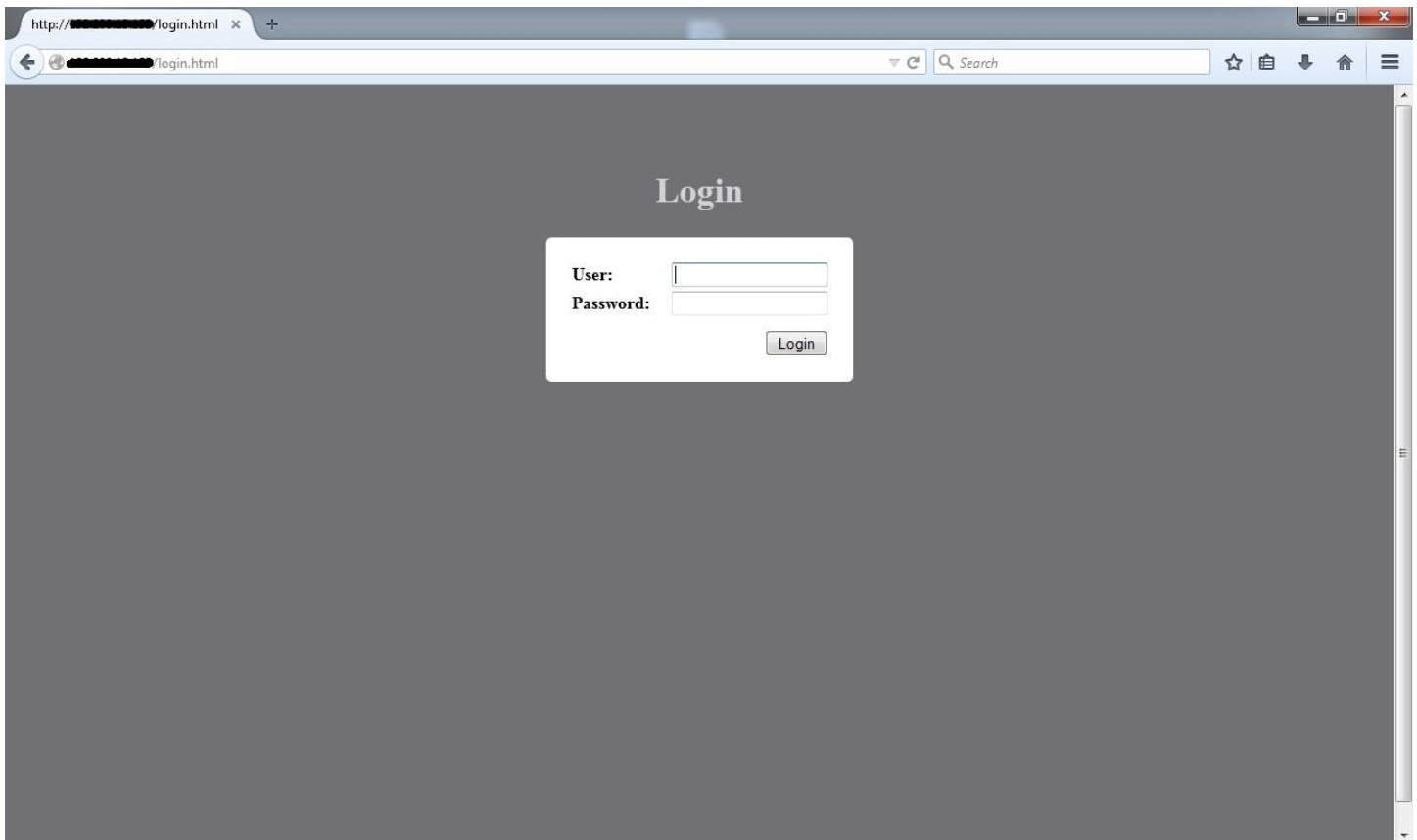


Connecting the Planet
ISOTROPIC
NETWORKS, INC.

iDirect X7 Modem Loading Instructions

Connect the computer to the LAN port on the back of the modem and open a web browser (Firefox, Chrome, Internet Explorer, etc.).

Type the modem's IP address into the address bar at the top of the browser.



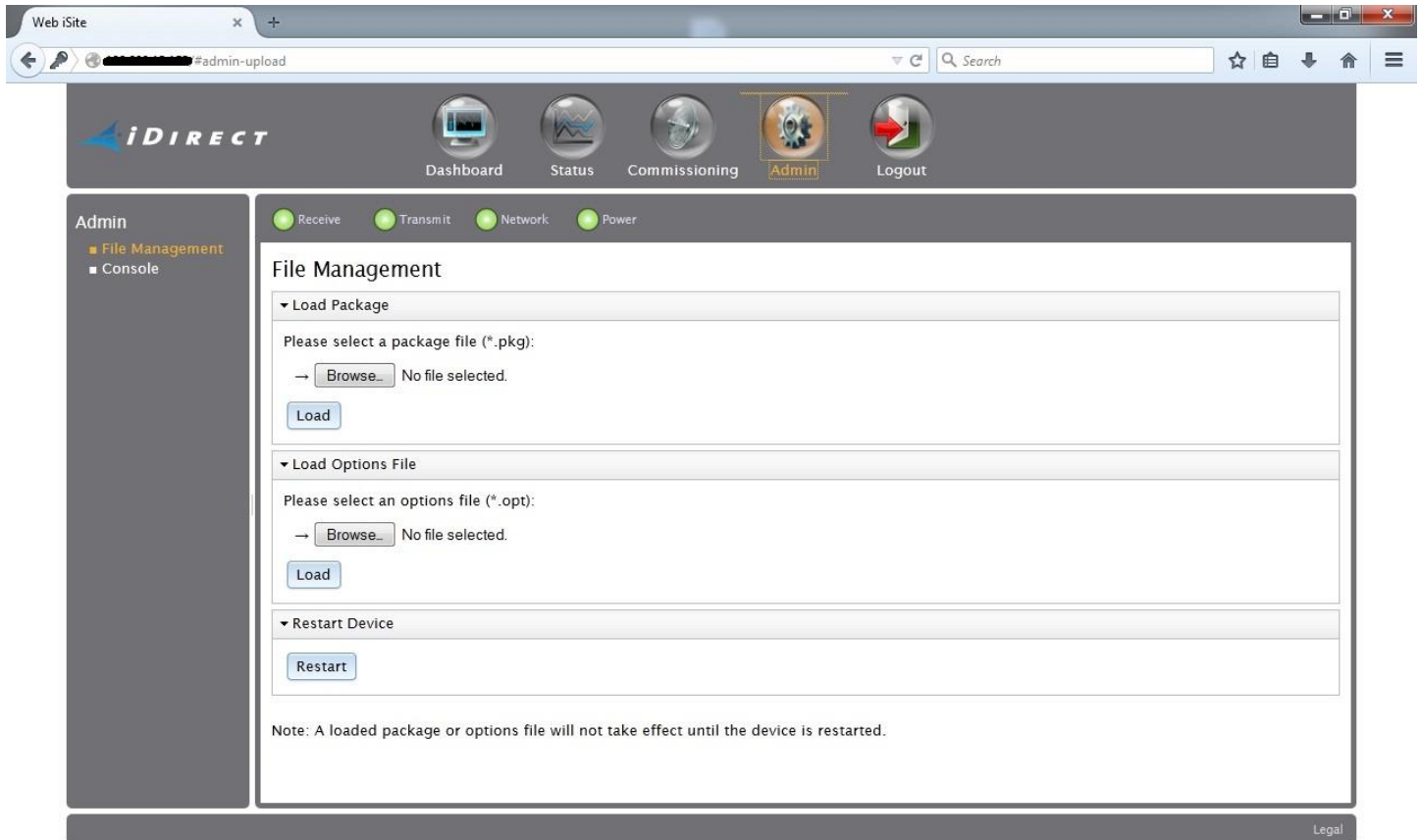
Log into the modem using the following credentials:

User: admin
Password: P@55w0rd!

Download version IDX 3.5.4.1 from our web site at "www.isosat.net/download/support-files/idirect_support_files/iDX3541.zip" Unzip this file into a separate folder on your desktop.

Loading software and options files

If a new option file or software packages need to be loaded, navigate to the “Admin” tab.



To load the software package, click **Browse** under the Load package field. Locate the package on your computer and then click load. An example of a software package name is **evo_x7_rmt-17.0.4.1.pkg**.

Once complete, you will see a completed pop up notification.

To load the options file, click **Browse** under the Load Options File field. Locate the options file on your computer and then click load.

Once complete, you will see a completed pop up notification.

After both the package and options file have been loaded, click **Restart** under the Restart Device field.