



ISOTROPIC NETWORKS, INC.

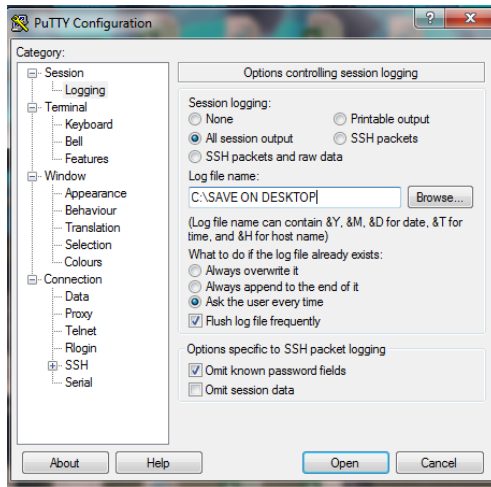
TEL 262.248.9600 · FAX 262.248.8100 · WWW.ISOSAT.NET
W2835 KRUEGER ROAD · LAKE GENEVA, WI 53147

How to create a telnet log session via Putty

[Link to Putty download - http://www.chiark.greenend.org.uk/~sgtatham/putty/](http://www.chiark.greenend.org.uk/~sgtatham/putty/)

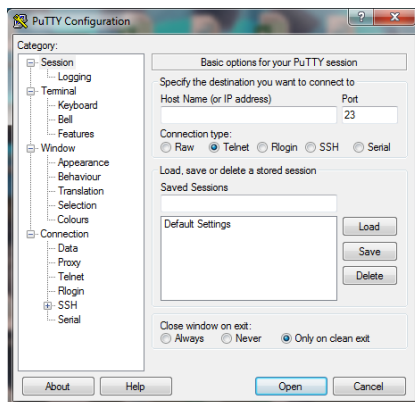
1. Connect the computer to the switch the modem is connected to via Ethernet cable
2. Open Putty
3. Under the “Category” box, on the left side of the screen, click on “Logging” (See Screen Shot A Below)

Screen Shot A



4. Under “Options controlling session logging”
 - a. Select radio button “All session output”
 - b. Log file name: = (Select a location and file name to save the log)
5. Under the “Category” box, on the left side of the screen, click on “Session” (See Screen Shot B Below)

Screen Shot B



6. Under “Host Name (or IP address)” input the modem IP address of 216.10.54.218

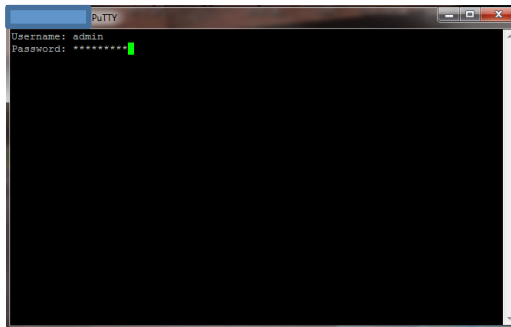


ISOTROPIC NETWORKS, INC.

TEL 262.248.9600 · FAX 262.248.8100 · WWW.ISOSAT.NET
W2835 KRUEGER ROAD · LAKE GENEVA, WI 53147

7. Under “Connection type” select the “Telnet” button
8. At the lower right hand corner click “Open” This will open another window (See Screen Shot C Below)

Screen Shot C



9. Input User Name: admin / Password: iDirect
10. Input “pcmd 5000 rx snr” hit enter
11. Input “pcmd 15000 txstate” hit enter
12. Input “rmtstat”
13. These three commands will request information to be pulled every 5 and fifteen seconds.
14. Once the session is closed the log file will be in its predetermined location.